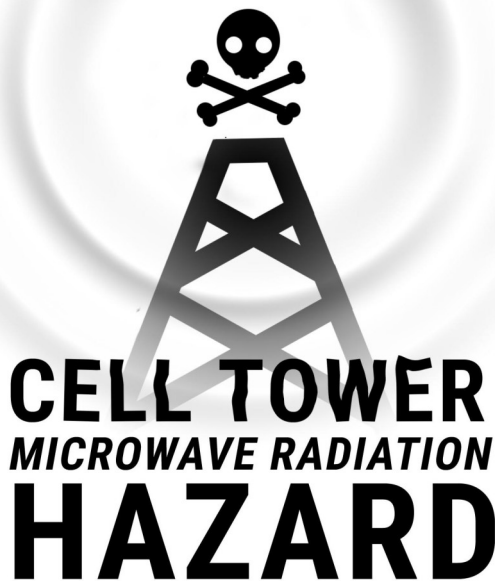


# My Street, My Choice!

Don't let Palo Alto be the place where **Democracy Dies** and **Cell Towers Metastasize**.

 **CAUTION**



**Cell Towers 15-50 feet from homes!**

**Full-Power Verizon Cell Towers** are coming to city-owned utility or light poles on your street. The pole near you **could be next**.

**Safety:** Cell towers on or near fire stations caused **brain abnormalities** in every firefighter examined. **You could be next.**

**Privacy:** Cell Towers this close to homes is a 24/7 surveillance grid. Once Verizon grabs the real estate, it can **increase the power, height, or width and swap out equipment**, without review.

**Property Values:** homes near cell phone towers are **devalued 20-25%**. **Your home could be next.**

## What You Can Do:

1. Preserve your neighborhoods through **strength in numbers**: the 99% far outnumbers the 1%. Please bring everyone you know to the Palo Alto **"Line in the Sand" Protest & City Council Meeting on Mon May 21 at 4:30 pm**. Bring signs to protest and stay for the meeting to support those who will speak to **Appeal** the decision to install **11 Close Proximity Microwave Radiation Antennas (CPMRA)** in *Palo Alto's residential zones*.
2. Visit the **mystreetmychoice.com** Palo Alto page and click the **green button** at the top of the page; complete the form to enter your comment/question into the public record.
3. **Email and call Palo Alto City Council members** listed on the Palo Alto page to tell them **NO CPRMA installations in residential zones** because there is **NO SIGNIFICANT GAP** in Verizon coverage in Palo Alto: proof at <http://mystreetmychoice.com/videos.html>

# Generation Zapped Errata



*Documentary films with high production values, like Generation Zapped, take a long time to make and generally get some things right, some wrong, and are somewhat out-of-date. With no disrespect to the team that financed, produced and shot this high-quality film, it is important to ensure that viewers have the most accurate and up-to-date information about of the hazards of pulsed, data-modulated, Radiofrequency Microwave Radiation exposures and the strategies/tools that communities can use to defend themselves against the onslaught of unnecessary Wireless expansion, promoted in US schools and neighborhoods in 2018 — including the misguided, and unnecessary expansion of Close Proximity Microwave Radiation Antennas (CPMRA) into residential zones — which communities can successfully deny, as Monterey and Hillsborough just did.*

## Clarification/Corrections

1. Use adapters to connect tablets and laptops to **Ethernet wires — both feasible & cost-effective for schools.**
2. RF microwave radiation exposure over time, not the rate of exposure is what really matters. Minimize exposures.
3. FCC RF Microwave Radiation exposure guidelines are commercial—not safety — guidelines and **are not protective.**
4. Proximity and duration of RF/MW radiation is more important than intensity.
5. **Electromagnetic Sensitivity** (not Electromagnetic Hypersensitivity) is the disabled characteristic recognized by the Federal Access Board since 2002.
6. 25,000+ studies are sufficient to establish that RF radiation is a toxic agent & a Group 1 carcinogen. **More research is not needed before taking action.**

## Links to Valuable Information

1. <http://octowired.com>
2. <http://responsibleipad.com>
3. <http://electrosensei.com/counter.html>
4. <http://scientists4wiredtech.com/regulation/rf-microwave-exposure-guidelines/>
5. <http://scientists4wiredtech.com/?s=hazards>
6. <http://mystreetmychoice.com/press.html>
7. <http://mystreetmychoice.com/videos.html>  
~ More Videos ~
8. **Resonance, Beings of Frequency**  
<https://vimeo.com/54189727>
9. **Slow the Rush to 5G & Wi-Fi in Schools**  
<https://youtu.be/hkDDQqDVsbk?t=58s>
10. **How Radio Waves Make You Sicker**  
<https://youtu.be/37j2jDN8IVo?t=16m20s>
11. **Hazards of EMFs and RF Radiation**  
<https://youtu.be/a2PNFEdmYok?t=1m36s>
12. **U.S. Embassy in Moscow, 1953-1978**  
<https://youtu.be/owCeCC6B69k?t=4m7s>