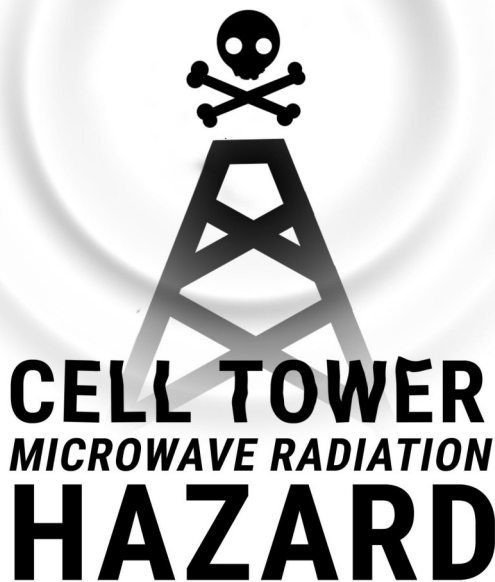


My Street, My Choice!

Don't let Santa Rosa be the place where **Democracy Dies** and **Cell Towers Metastasize**.

 **CAUTION**



Cell Towers 15-50 feet from homes!

Full-Power Verizon Cell Towers are coming to PG&E utility or city-owned light poles on your street. The pole near you **could be next**.

Safety: Cell towers on or near fire stations caused **brain abnormalities** in every firefighter examined. **You could be next.**

Privacy: Cell Towers this close to homes is a 24/7 surveillance grid. Once Verizon grabs the real estate, it can **increase the power, height, or width and swap out equipment**, without review.

Property Values: homes near cell phone towers are **devalued 20-25%**. **Your home could be next.**

What You Can Do:

1. Preserve your health and neighborhoods by demonstrating **strength in numbers**: Please bring everyone you know to the **City Council Study Session on Mar 6 at 3:00 pm**. Please arrive at 2:45 pm, wear a **white shirt** and show support for those who will speak.
2. Visit **mystreetmychoice.com**, go the Santa Rosa page, click the **green button** at the top of the page; complete the form to enter your comment/question into the public record.
3. **Write and call Gabe Osburn** at the City of Santa Rosa to log your complaint about the hazards of Cell Towers 15-50 feet from homes: **707-543-3853** and **gosburn@srcity.org**